

The Thomas Hartman Center for Parkinson's Research

Parkinson's Research Symposium

Friday, October 7
9 am to 3 pm

Charles B. Wang Center
Theater on Lower Level
Stony Brook University
100 Nicolls Road, Stony Brook

KEYNOTE

Autoimmune Features of Parkinson's Disease

DAVID SULZER, PhD

Professor, Departments of Psychiatry, Neurology, Pharmacology; School of the Arts, Columbia University

PRESENTATIONS

The Role of Annexin-A1 in Dopaminergic Anoxic Dysfunction in Parkinson's Disease

Subthalamic Nucleus: Roles in Cognition in Parkinson's Disease

Study the Aging Components of Parkinson's Disease using the African Killfish

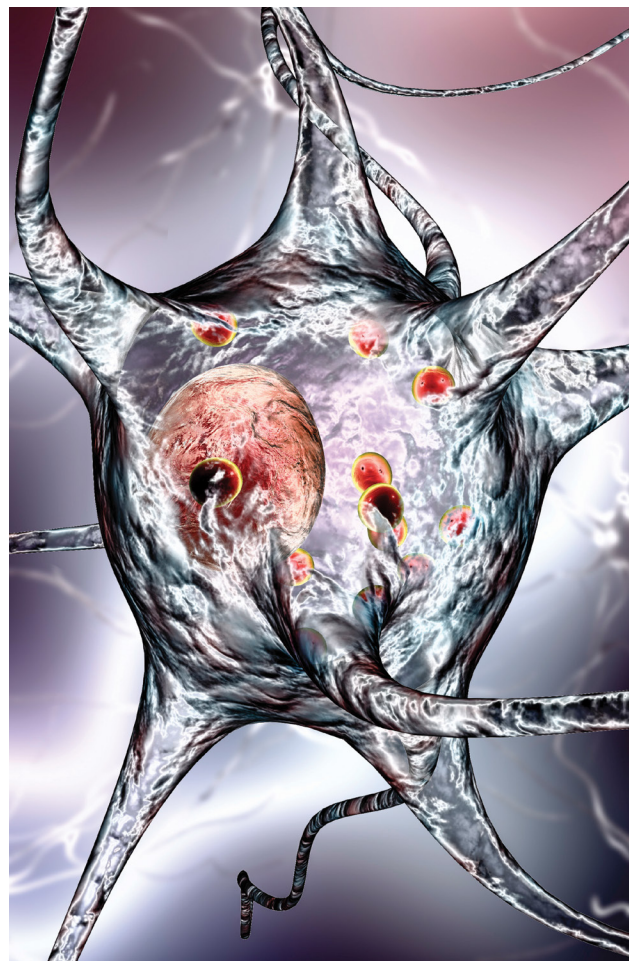
Moving and Thinking/Thinking and Moving: The Relationship Between Cognition and Walking in People with Parkinson's Disease

Parkinson's Disease Psychosis

Open to our Stony Brook University community of: students, post-doctoral researchers, medical school students, research scientists, clinicians, other Stony Brook healthcare professionals and employees with an interest in Parkinson's disease.

Free. Registration required. Refreshments and lunch provided.

Discussion and audience Q&A after presentations.



REGISTER BY SEPTEMBER 23

bit.ly/hartmancentersymposium2022



Stony Brook University