

Facilities & Services:

Stony Brook University

January 5, 2024

Agenda

- Introduction
- SUNY Educational Facilities Capital Appropriation
- Critical Maintenance (SUBOA) Distribution Formula
- Facilities Overview & Deferred Maintenance Backlog
- SUNY System Facilities Condition
- SBU Annual Capital Appropriation – Educational Facilities Capital + Res Hall
- Discussion

Introduction

Capital Funding Sources

- Strategic Initiatives (SI)
- Critical Maintenance (CM)
 - Annual SUBOA Distribution
 - SUCF Managed
 - Lump Funding
 - Flexible CM
 - Research Capital
- Grants, Gifts & Campus 384
- Energy Projects
 - End of NYPA Program
 - NYSERDA

Limiting Factors

- Prioritization vs. Sequencing
 - Resource Leveling
- Bonding cap limitations
- Unforeseen events
 - Supply chain disruptions
 - Labor Issues
- Regulatory Controls
 - State University Construction Fund (SUCF)
 - Division of Budget (DOB)
 - Office of the State Controller (OSC)
 - Environmental (DEC)

SUNY Educational Facilities Capital Appropriation

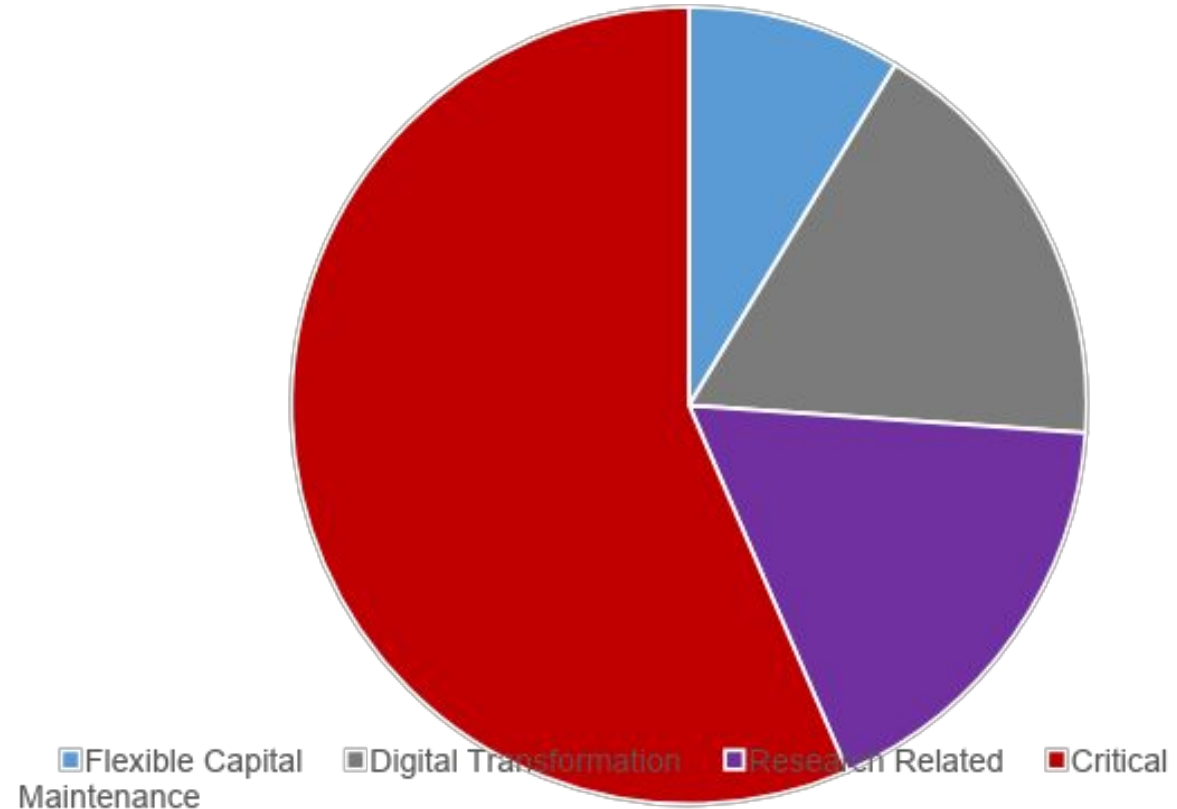
\$1.15 Billion

Flexible Capital \$100M

Digital Transformation \$200M

Research Related (SBU & UB) \$200M

Critical Maintenance \$650M





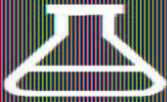





Critical Maintenance (SUBOA) Distribution Formula

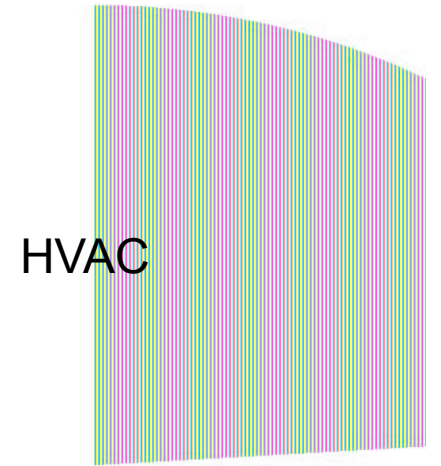
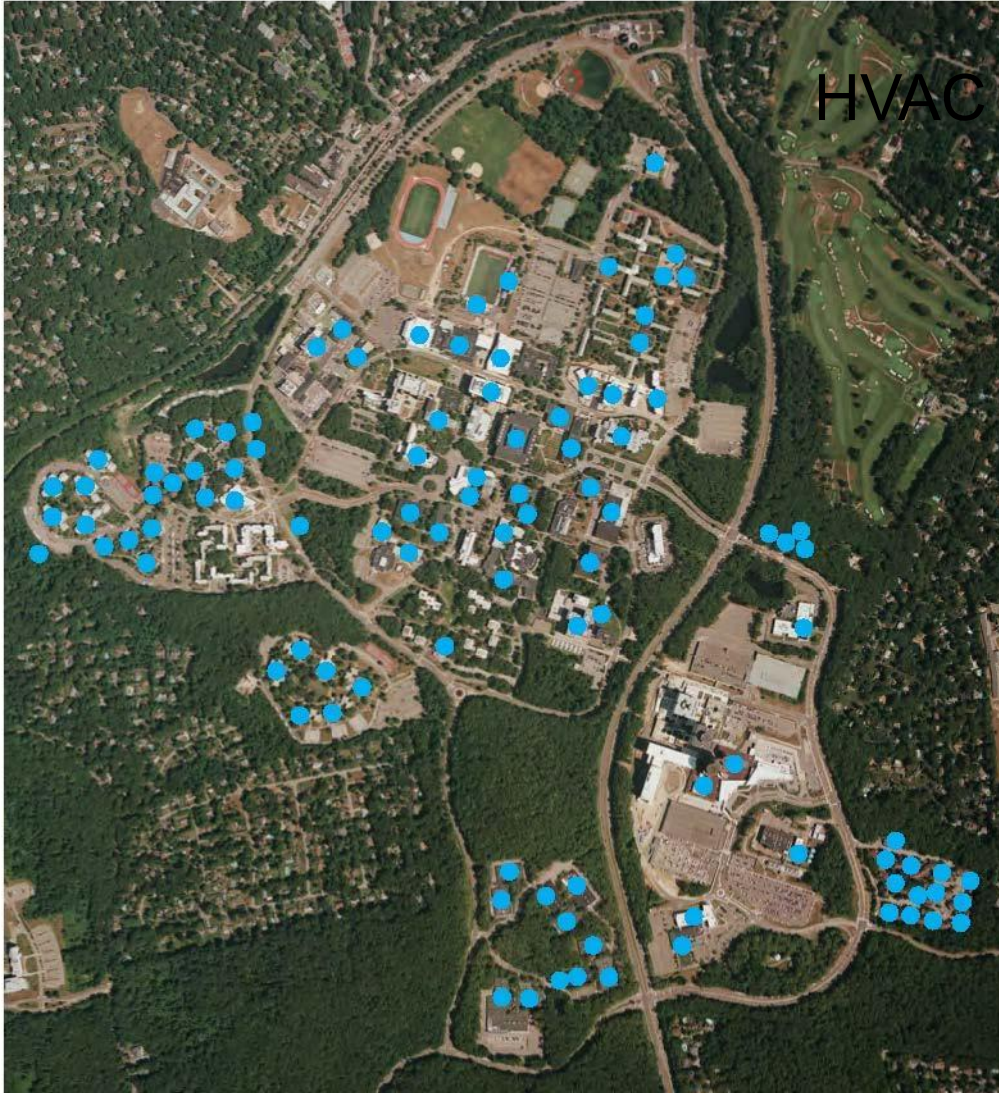
					Total CM Appropriation: \$ 650,000,000		
					High Priority Lump Sum: \$ 456,622,068		
		Academic GSF Relative %	Age-Weighted GSF Relative %	FTE/Headcount Relative %	Amount to Distribute Via Formula: \$ 193,377,932		
<i>Weighting Factors:</i>		1/3	1/3	1/3			
Rank	Campus	Total Academic GSF	GSF 40+ Years	Student FTE	RS Means Location Factor Adjusted	Final Weighted Campus Distribution %	Critical Maintenance Allocations
↑ Five ↑							
1	STONY BROOK	11%	12%	12%	1.4	15.18%	\$ 29,359,000
2	BUFFALO UNIVERSITY	15%	11%	14%	1.1	12.70%	\$ 24,562,000
3	BINGHAMTON	7%	7%	9%	1.0	6.69%	\$ 12,943,000
4	ALBANY	6%	6%	8%	1.1	6.35%	\$ 12,284,000
5	CORNELL UNIVERSITY	9%	8%	3%	1.0	5.95%	\$ 11,512,000
↓ Five ↓							
23	ALFRED STATE	1%	2%	2%	1.0	1.42%	\$ 2,740,000
24	COBLESKILL	1%	1%	1%	1.1	1.22%	\$ 2,368,000
26	MARITIME	1%	1%	1%	1.4	1.23%	\$ 2,386,000
26	DELHI	1%	1%	2%	1.1	1.23%	\$ 2,376,000
27	CANTON	1%	1%	2%	1.0	1.17%	\$ 2,270,000



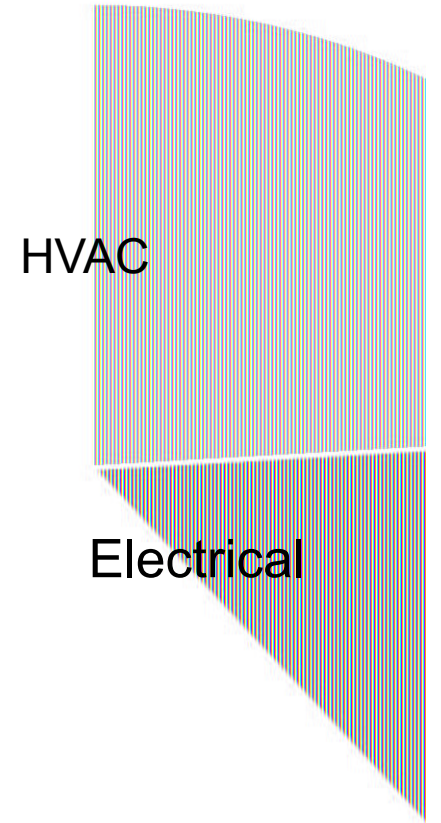
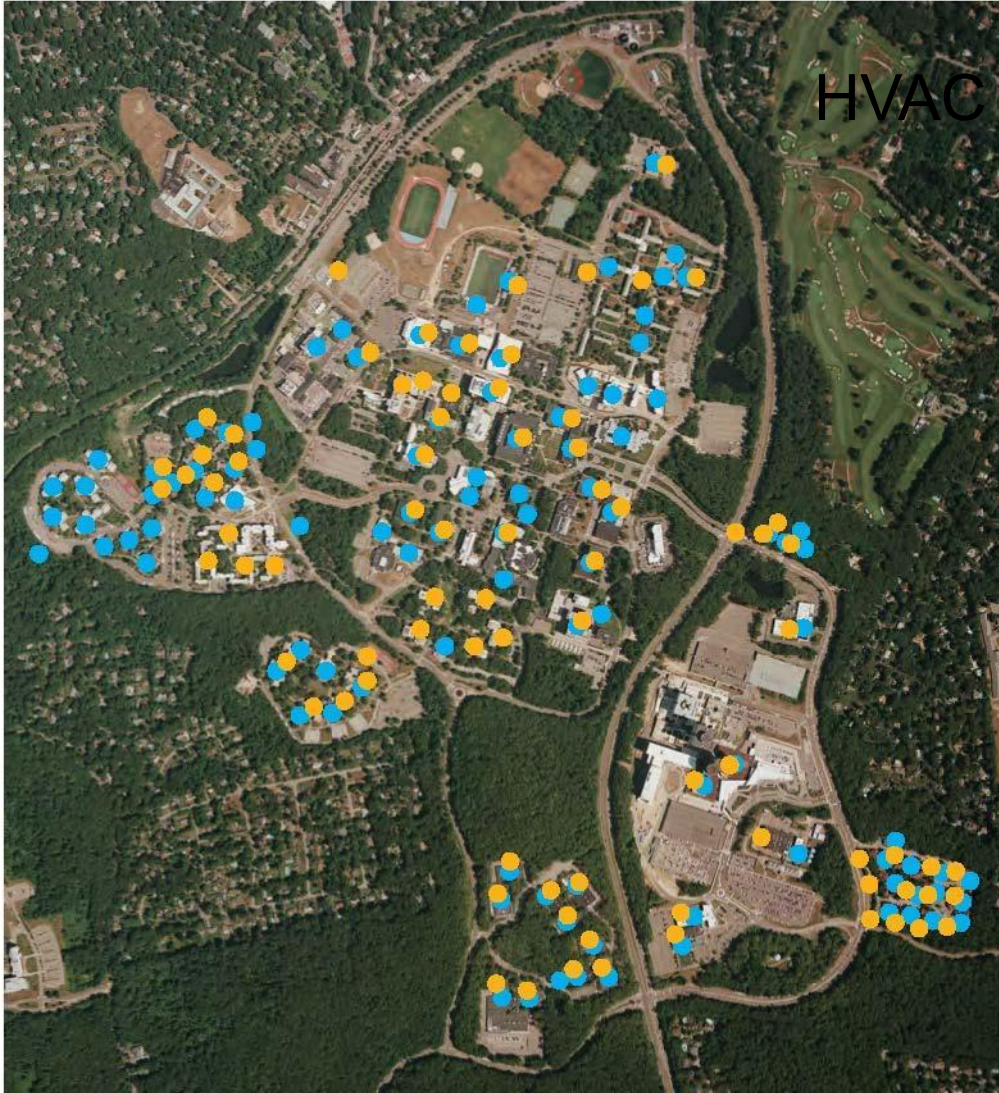
SBU FACILITIES FAST FACTS

 44,000 STUDENTS, FACULTY & STAFF	 55 FACILITY SERVICES EMPLOYEES
 260 LOCAL TRADES (SFE)	 13 MIL SQUA FEET OF SPACE
 1,466 LABS	 213 CLASS BUILDINGS
 1,452 ACRES OF LAND	 16 MIL ROAD

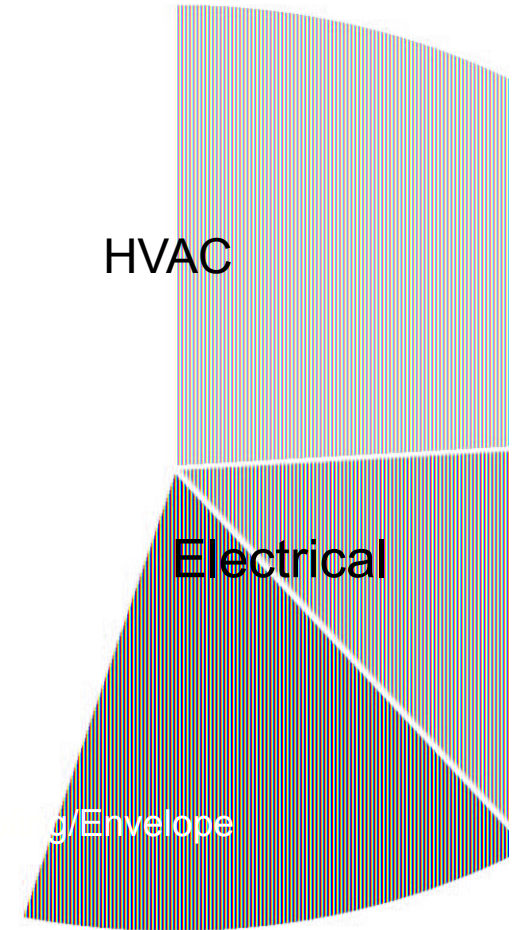
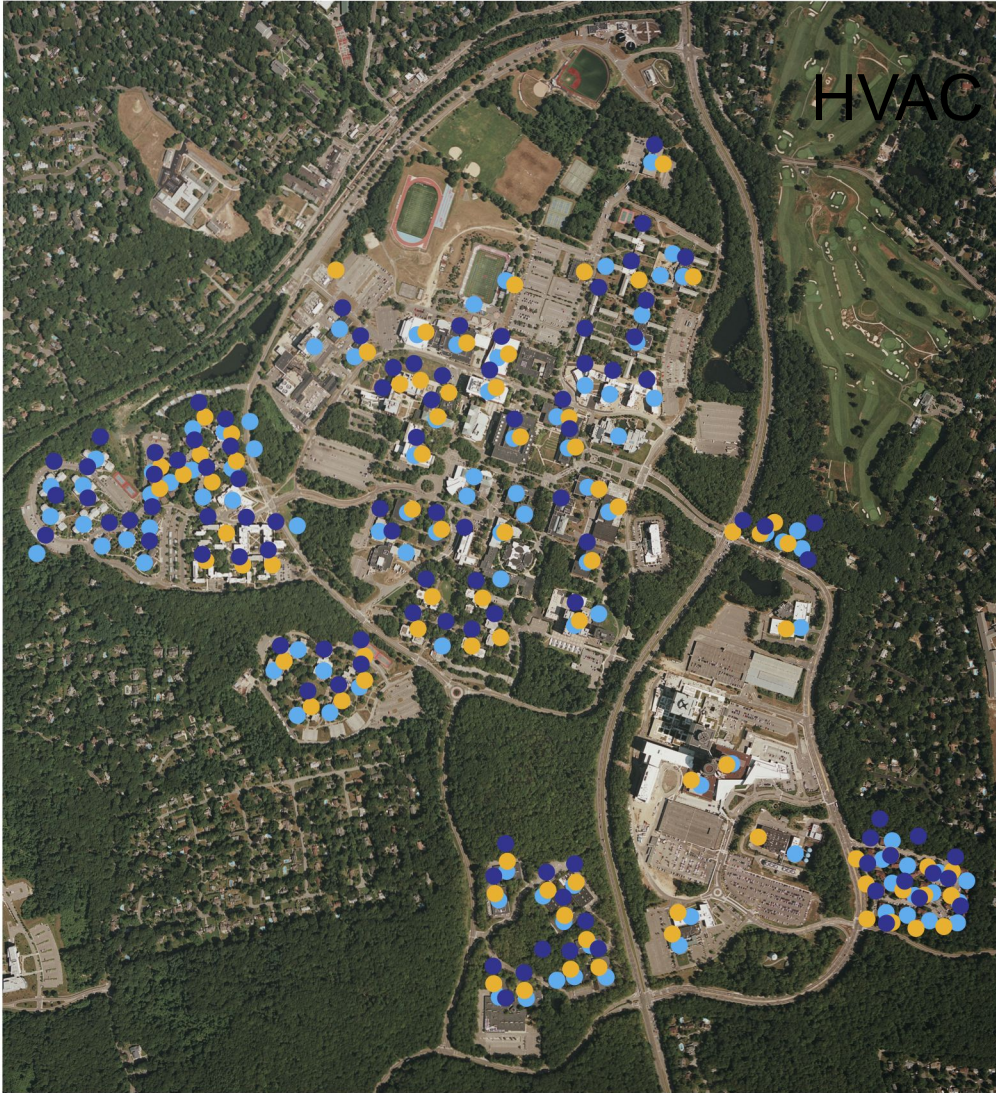
HVAC



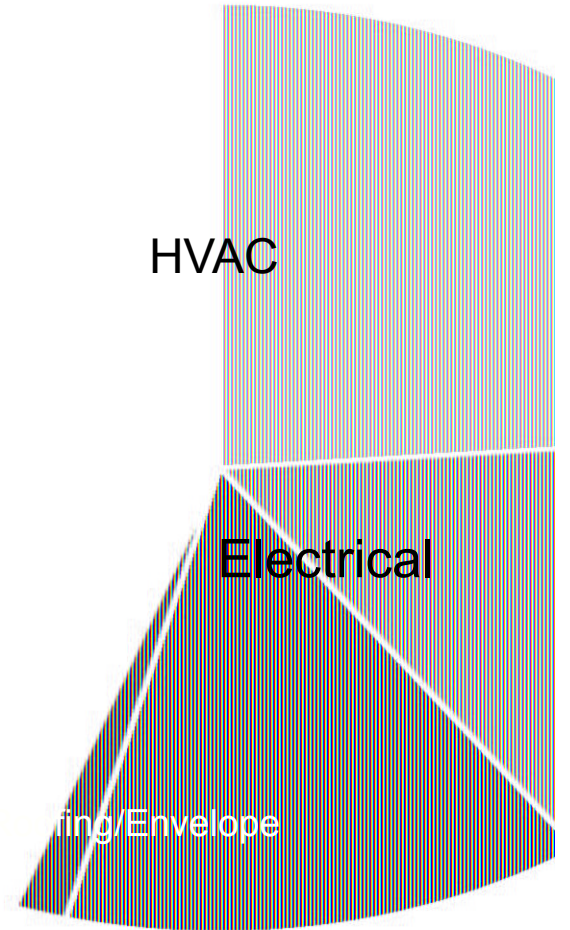
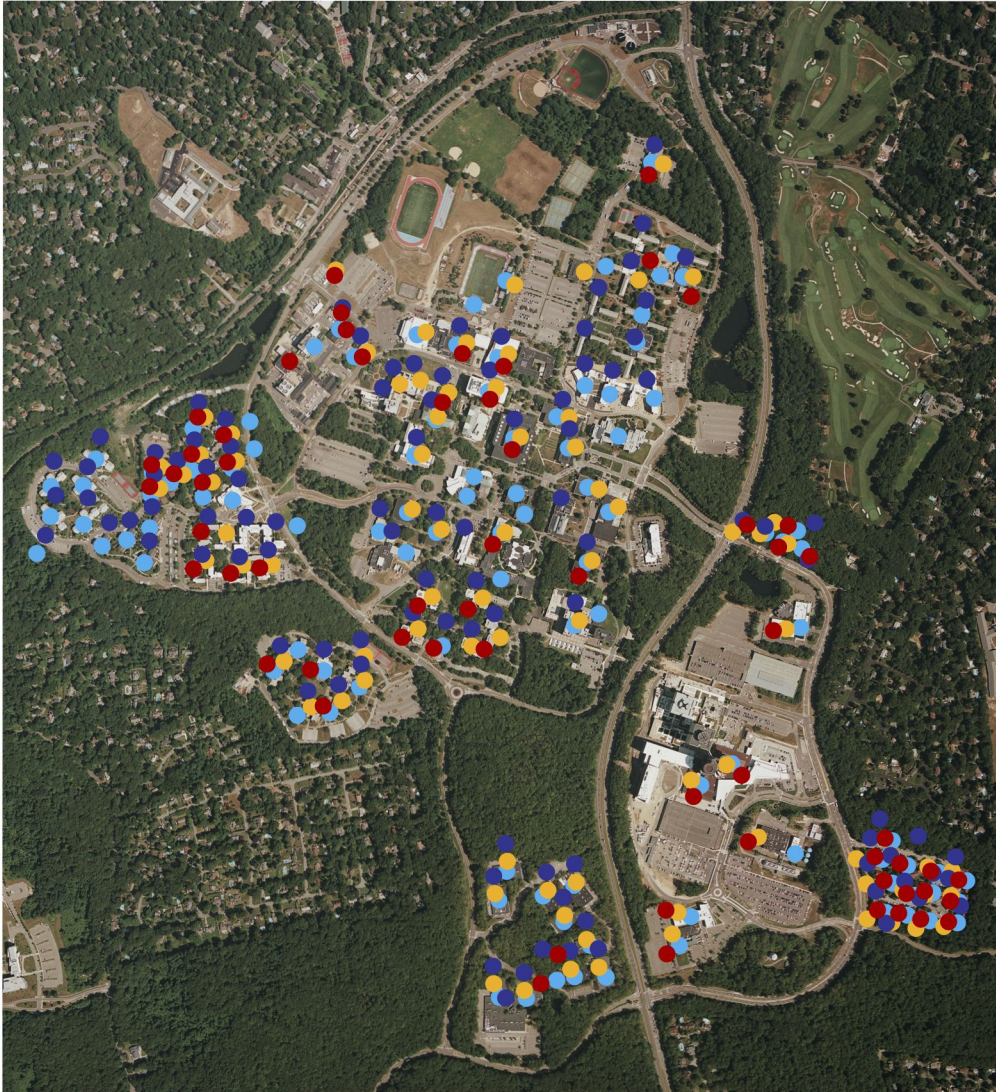
Electrical



Roofing/Envelope

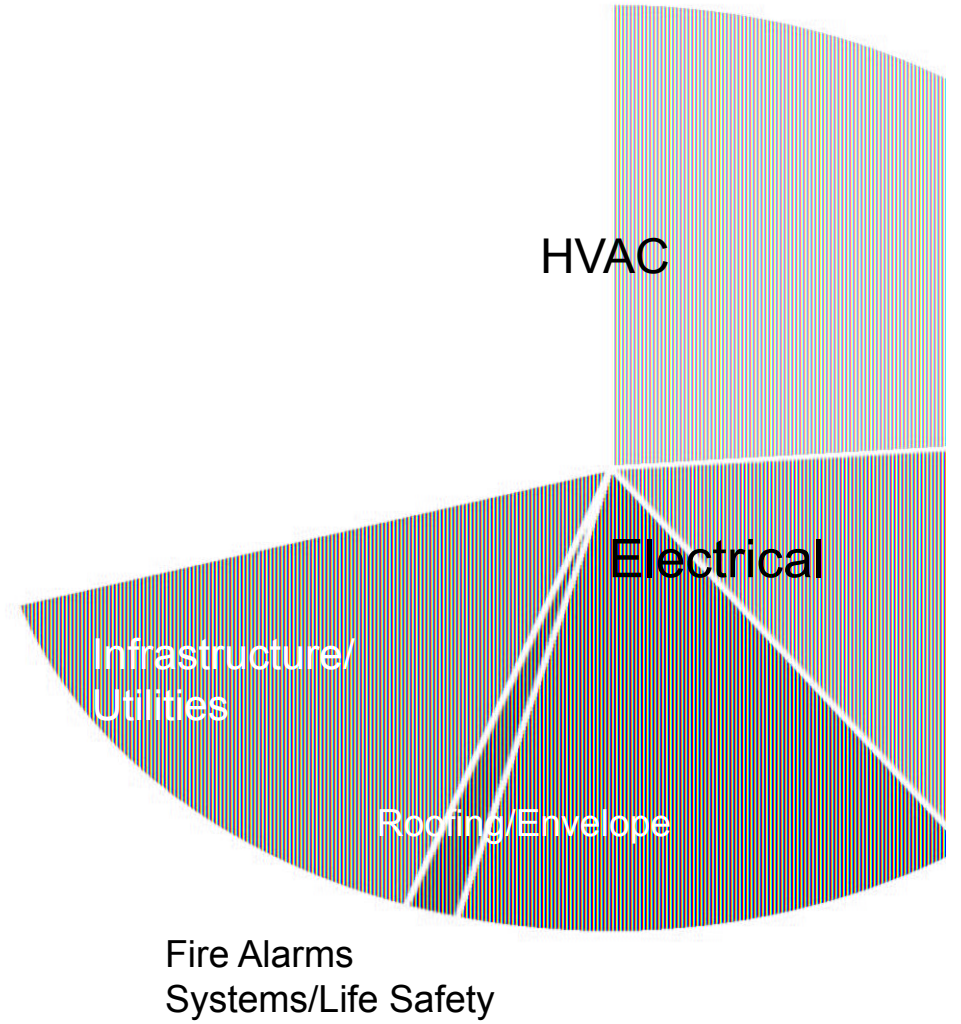
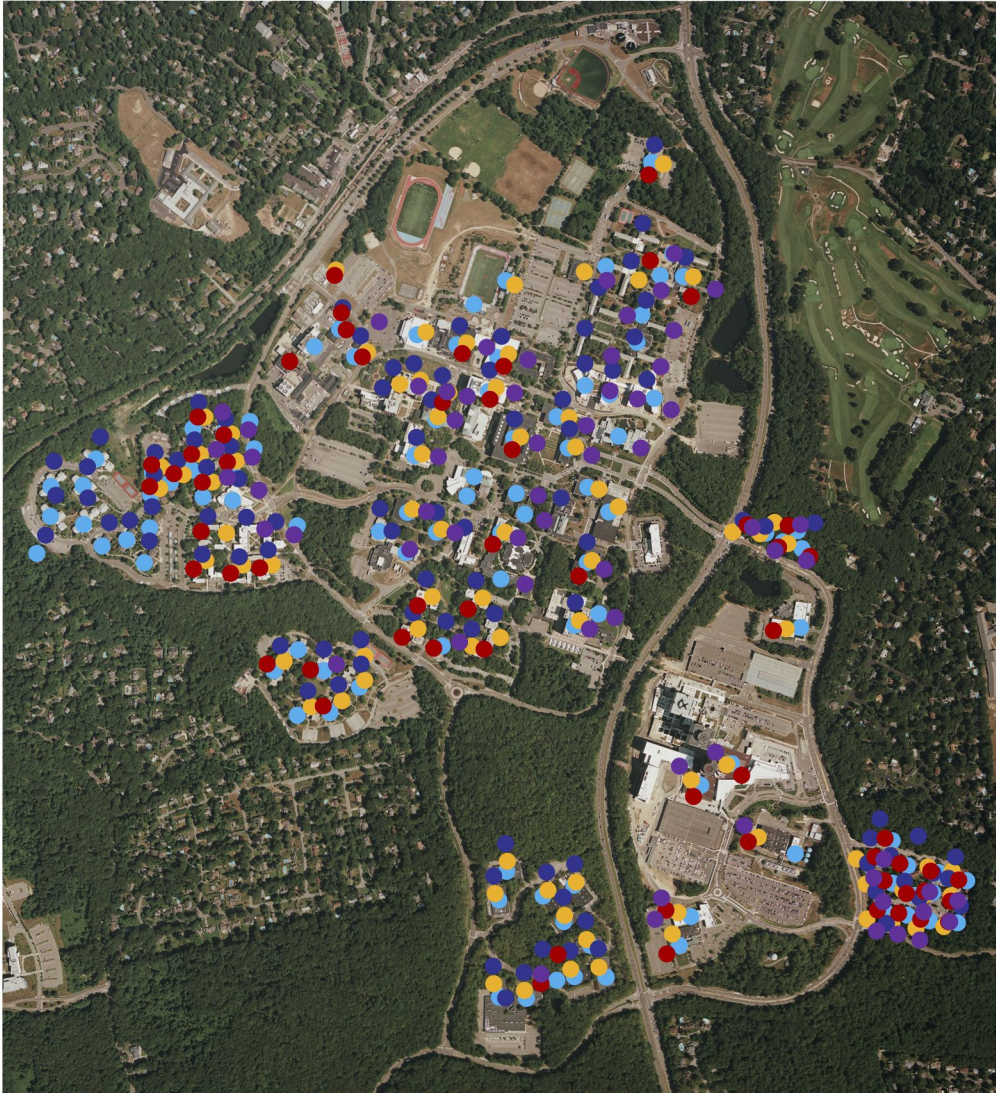


Fire Alarms Systems/Life Safety

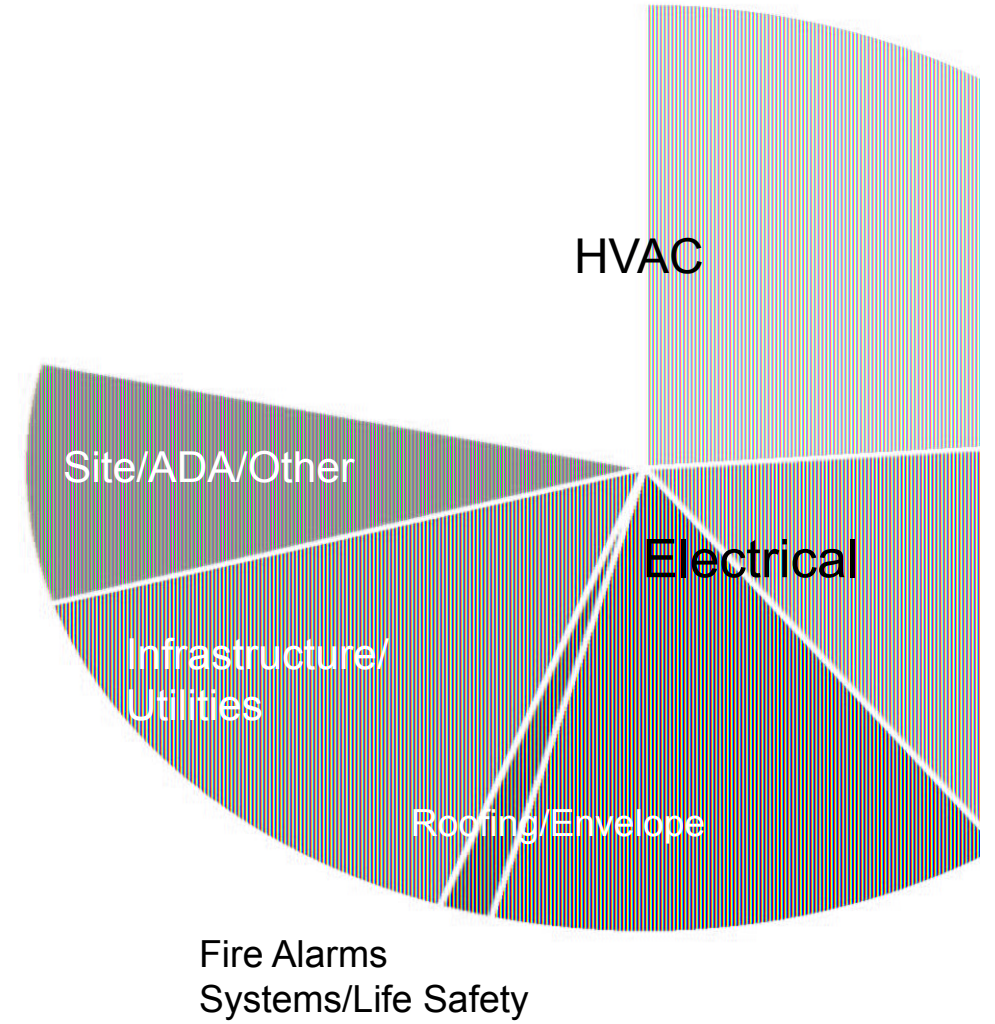
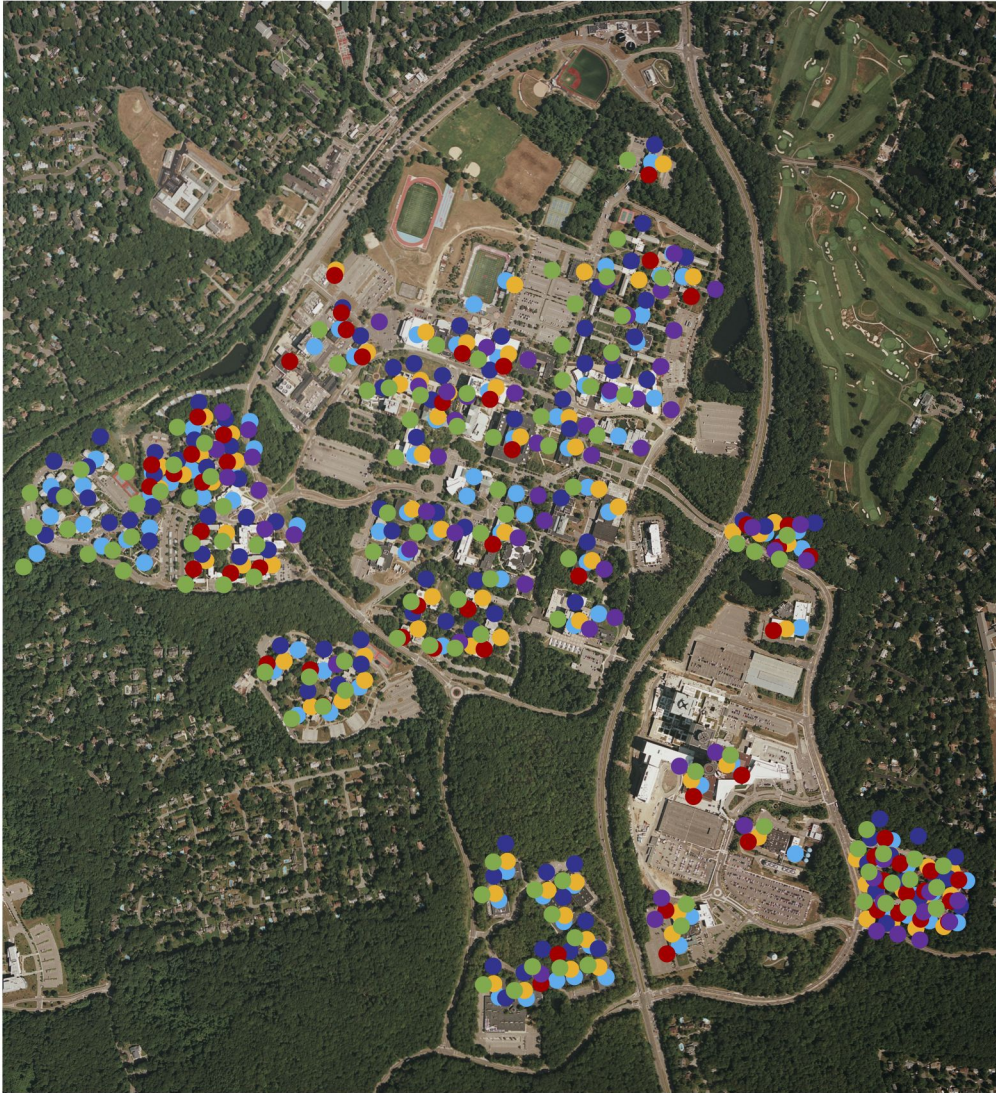


Fire Alarms
Systems/Life Safety

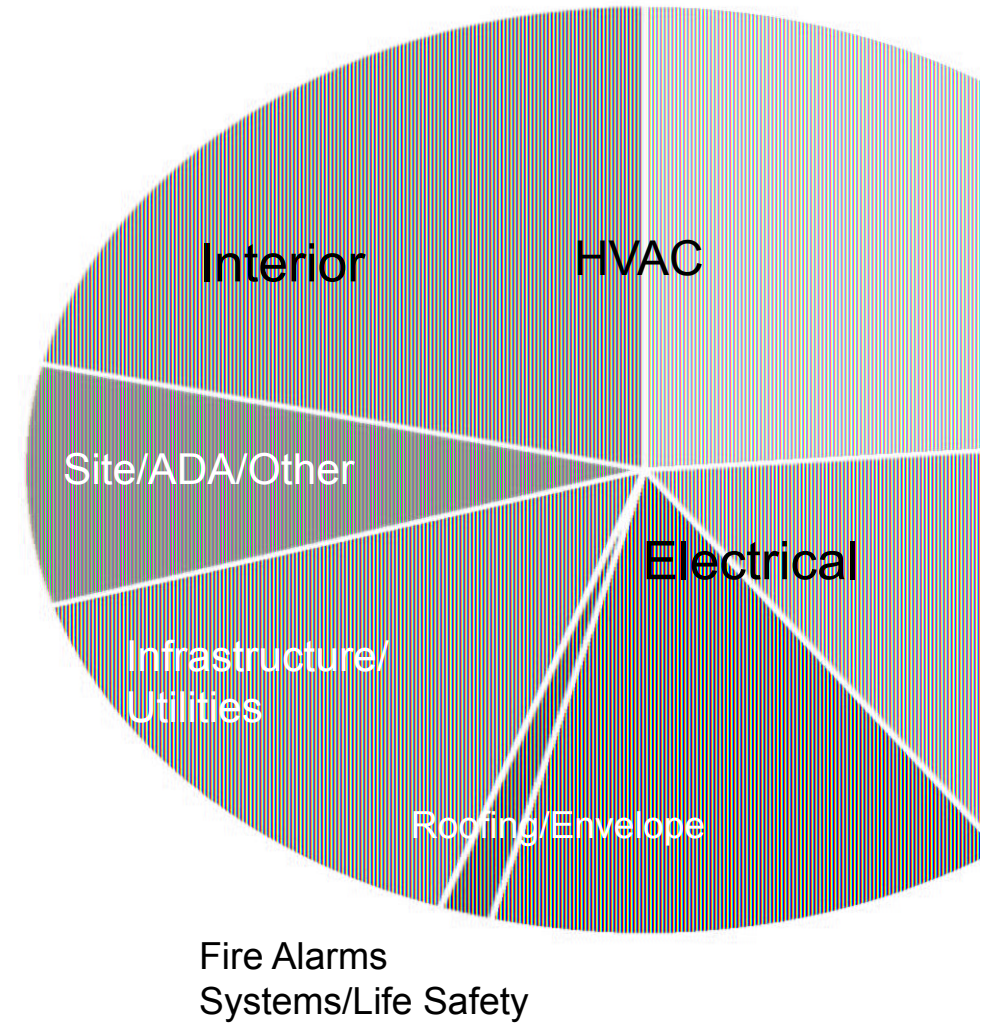
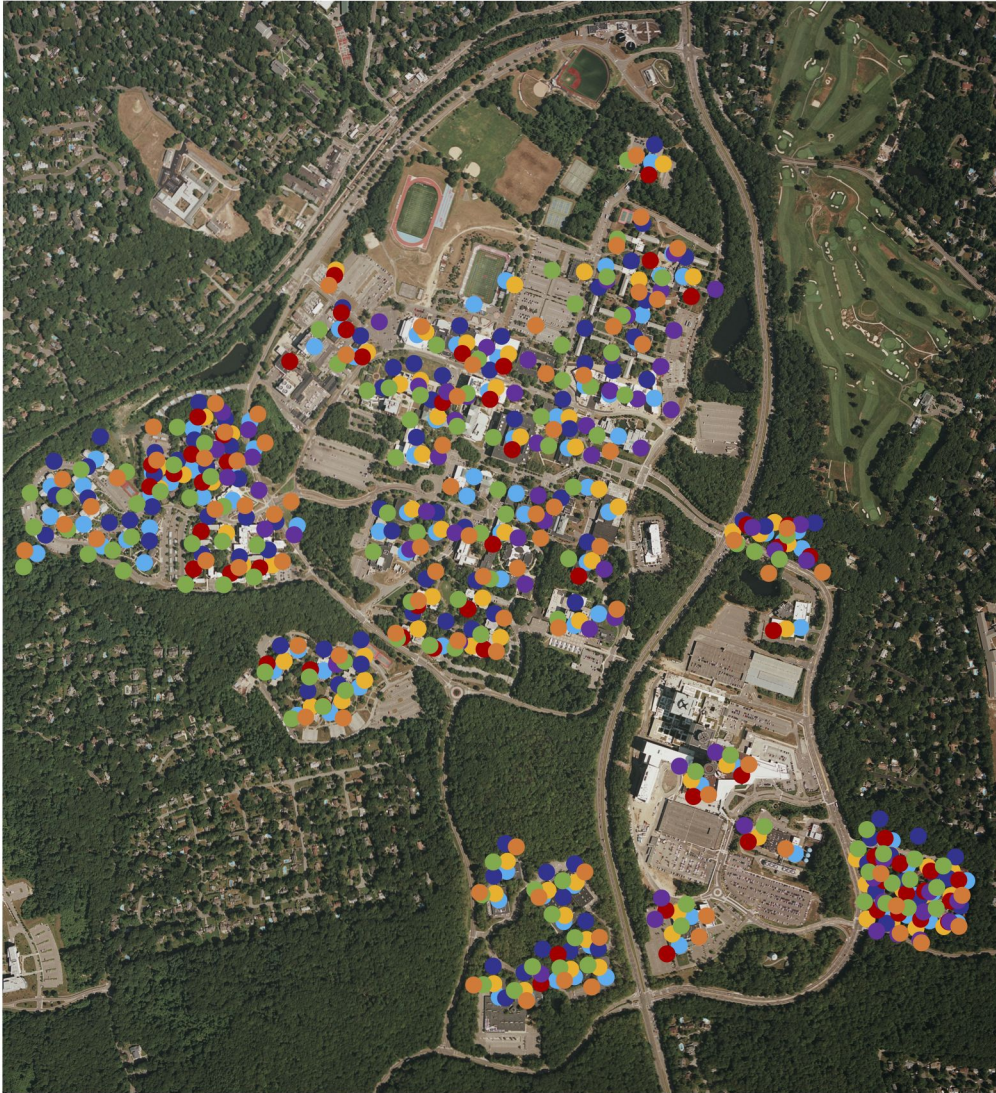
Infrastructure/Utilities



Site/ADA/Other



Interior



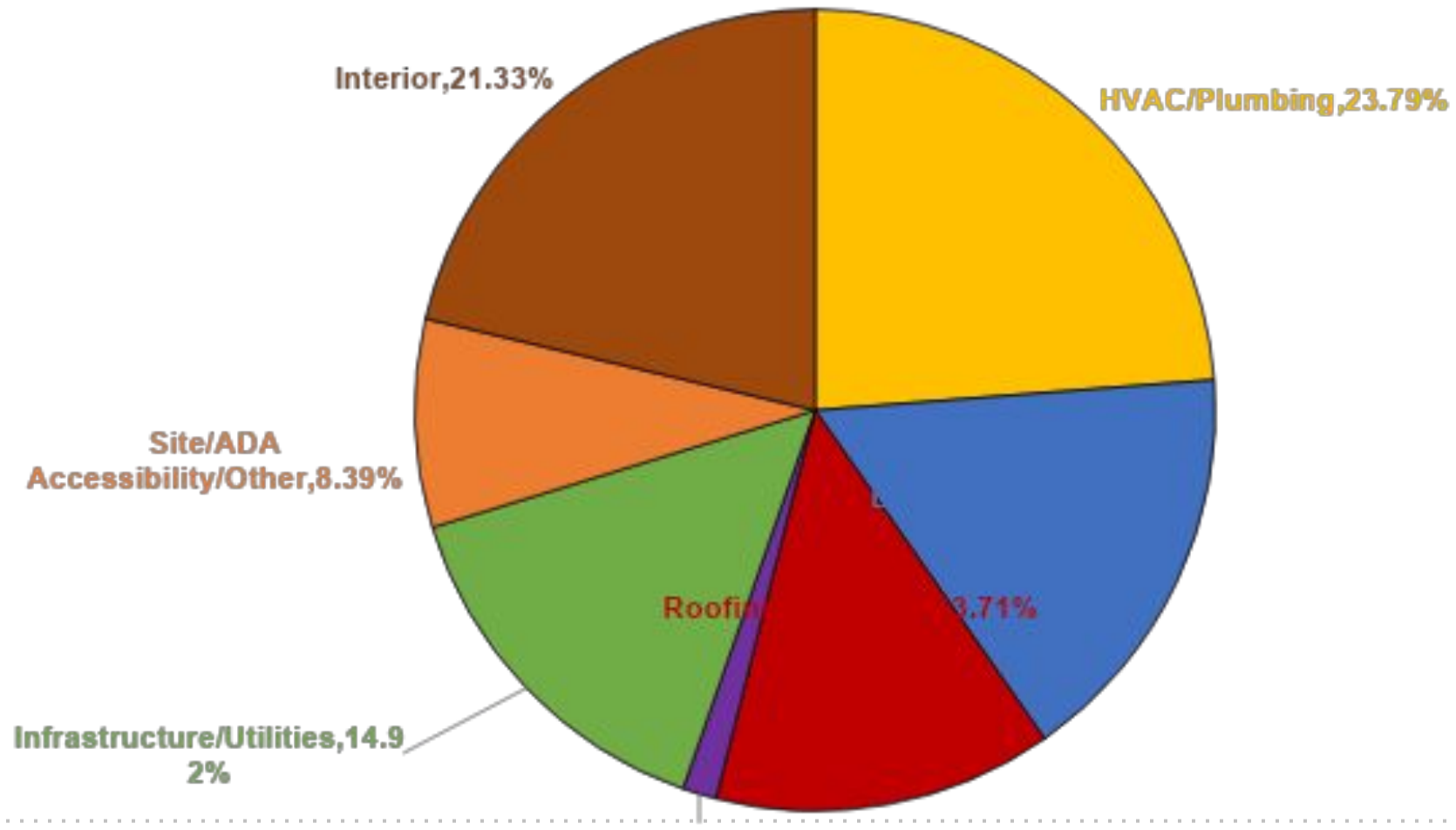
SBU Southampton Campus



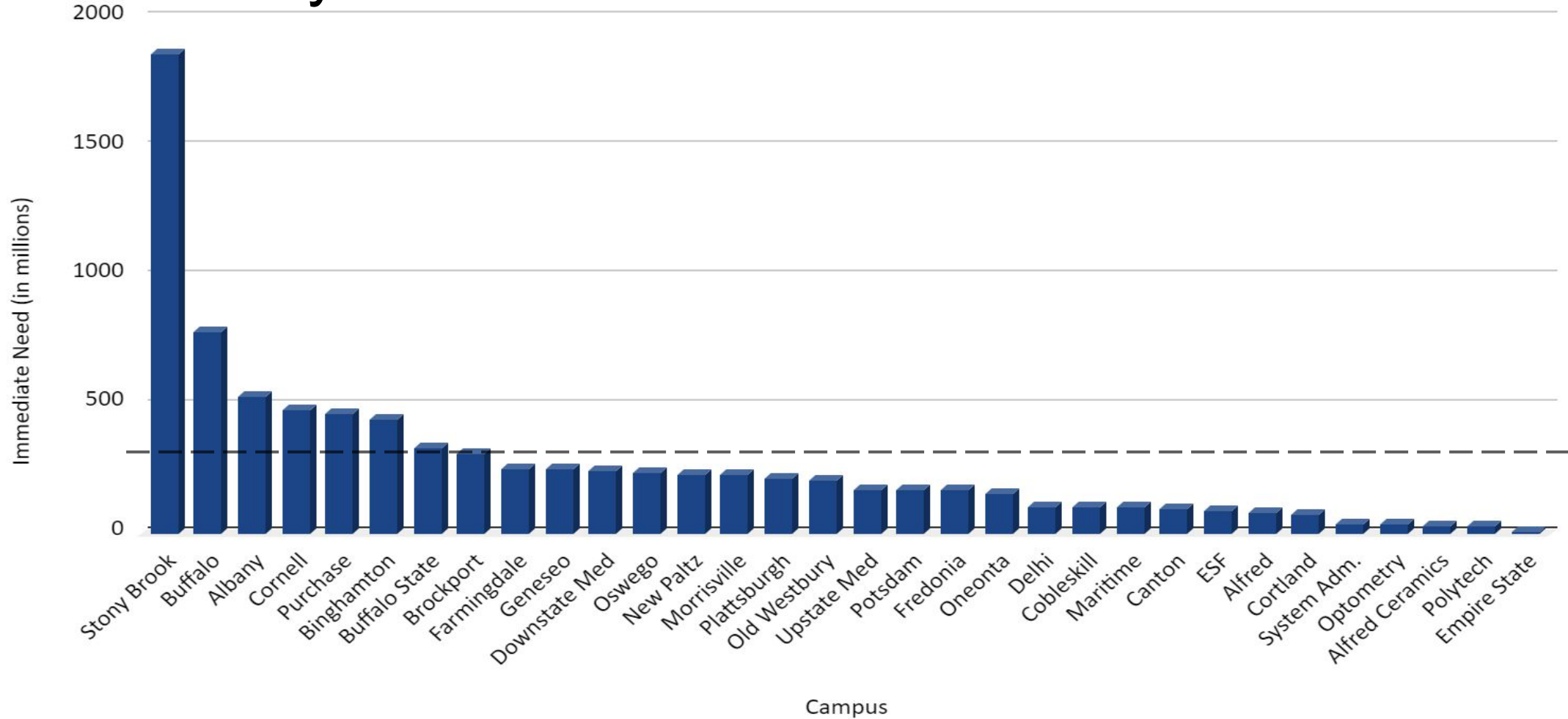
Features:

- 82 Acres
- 51 Buildings consisting of 450K SF
- 20 Buildings Abandoned/Condemned
- 639 Students (200 Residential/439 Commuter)
- Academic Programs:
 - **SOMAS:** B.S. Programs in Marine and Environmental Sciences. M.S. and Ph.D. programs in Marine and Atmospheric Sciences and M.A. in Marine Conservation and Policy.
 - **Health Sciences:** M.S. and Ph.D. programs in speech language pathology, physician assistant program, physical therapy, applied health informatics and occupational therapy.
- New Southampton Hospital planned.

SBU Deferred Maintenance Backlog Total = \$1.86 Billion

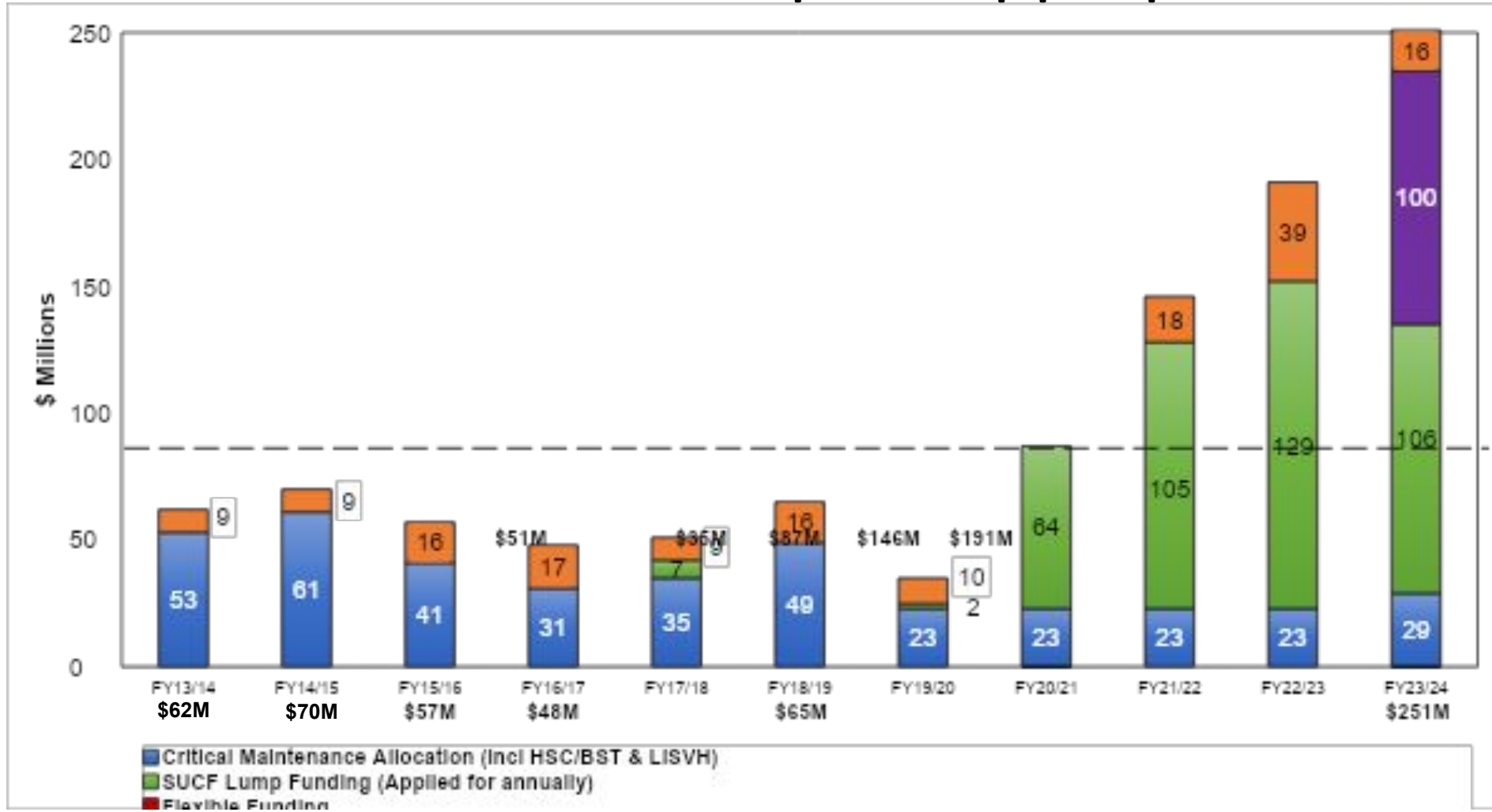


SUNY System Facilities Condition – Immediate Need



Source:
 SUNY SUCF Web site
<https://appls.sucf.suny.edu/portal/portalcontrol.cfm>

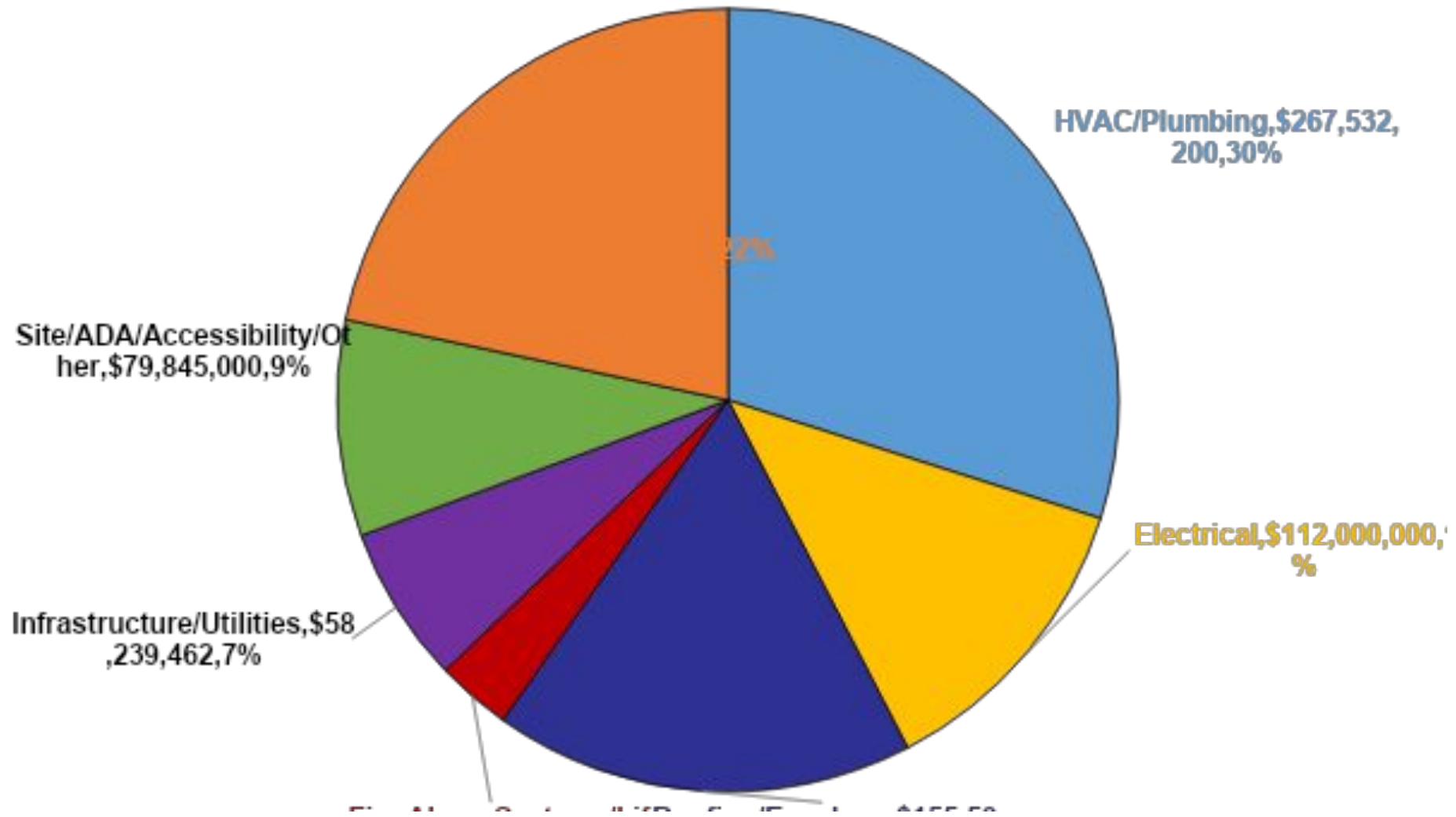
SBU Annual Capital Appropriation



\$84M/year required to arrest backlog of deferred maintenance

SBU 5 Year CM Investment Strategy

Total = \$895,197,762



Discussion